

# **FIRE DAMPER & DOOR SOLUTIONS**

**PRODUCT BROCHURE**



# INTRODUCTION

Duro Dyne Corporation has been manufacturing components for the Heating, Ventilating, and Air Conditioning industry since 1952. Over the years they have evolved into a leading manufacturer of sheet metal accessories and equipment for HVAC. Duro Dyne's extensive research and development program has introduced many cutting edge products to the industry, including Flexible Duct Connector, Vane Rail, Self-Drilling Screws, EZ Connector® and Pinspotter machines. Headquartered in Long Island, NY, with additional manufacturing and warehousing facilities in Ohio, Colorado and Canada, Duro Dyne is committed to innovation, excellent customer service, and providing the widest variety of quality products for the HVAC industry. Over the years Duro Dyne has established itself as the greatest name in sheet metal necessities.

## PRODUCT SUMMARY

Fire dampers are offered for use in both static and dynamic systems

- **STATIC SYSTEMS** are those in which the system fans shut down during fire and smoke control.
- **DYNAMIC SYSTEMS** are those in which the system fans remain running during fire and smoke control.

## CERTIFICATIONS

DuroDyne Fire Dampers are UL 555 approved and approved by the Standards and Appeals for use in New York City. Cal. 291-80-SA. Meets National Fire Protection Association - NFPA 90A.



# STATIC FIRE DAMPERS

FRAME	BLADES	FUSIBLE LINKS
Roll-Formed 22ga galvanized steel	Roll-Formed 22ga galvanized steel	165°F or 212°F Replaceable

## UL10A - BLADES IN AIR-STREAM

UL Classified UL555 - Meets NFPA 90A Standards



### 1 ½ Hour Rating

Vertical Sizes  
4" x 4" to 60" x 60"  
Multi-section up to  
120" x 120"

Horizontal Sizes  
4" x 4" to 34" x 60"  
Multi-section up to  
102" x 60"



### 3 Hour Rating

Vertical Sizes  
4" x 4" to 48" x 48"

Horizontal Sizes  
4" x 4" to 40" x 40"  
Multi-section up to  
80" x 40"

## UL10B - BLADES OUT OF AIRSTREAM

UL Classified UL555 - Meets NFPA 90A Standards

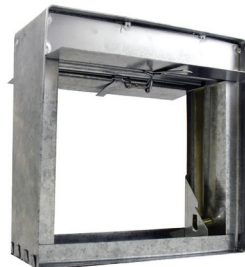


### 1 ½ Hour Rating

Vertical Sizes  
4" x 3" to 60" x 60"  
Multi-section up to  
120" x 120"

Horizontal Sizes  
4" x 3" to 34" x 60"  
Multi-section up to  
102" x 60"

100% Free Area



### 3 Hour Rating

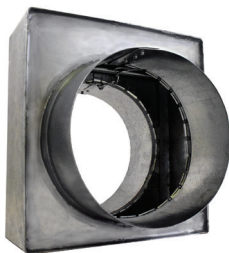
Vertical Sizes  
4" x 4" to 48" x 48"

Horizontal Sizes  
4" x 4" to 40" x 40"  
Multi-section up to  
80" x 40"

100% Free Area

## UL10C - SQUARE DAMPER WITH ROUND COLLARS

UL Classified UL555 - Meets NFPA 90A Standards

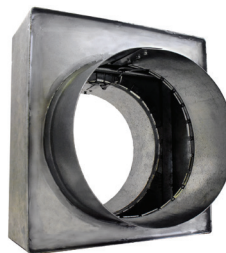


### 1 ½ Hour Rating

Minimum Collar Size  
3" Round  
5" x 5" Rectangular

Maximum Collar Size  
52" Round  
58" x 52" Rectangular

100% Free Area



### 3 Hour Rating

Minimum Collar Size  
3" Round  
5" x 5" Rectangular

Maximum Collar Size  
52" Round  
58" x 52" Rectangular

100% Free Area

## UL10D - THINLINE - 2" DEEP

UL Classified UL555 - Meets NFPA 90A Standards

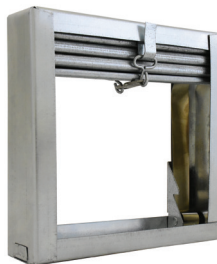


### 1 ½ Hour Rating

Vertical Sizes  
4" x 4" to 41" x 36"

Horizontal Sizes  
4" x 4" to 41" x 36"

Register Mounting Tabs  
available



### 3 Hour Rating

Vertical Sizes  
4" x 4" to 41" x 36"

Horizontal Sizes  
4" x 4" to 41" x 36"

Register Mounting Tabs  
available

# DYNAMIC FIRE DAMPERS

FRAME	BLADES	FUSIBLE LINKS
Roll-Formed 22ga galvanized steel (A-DY, B-DY, C-DY, D-DY Only)  Roll-formed galvanized steel hat-section with staked corners and integral bracing (MB-3V Only)	Roll-Formed 22 ga galvanized steel (A-DY, B-DY, C-DY, D-DY Only)  16ga (3V) Roll-formed galvanized (MB-3V Only)	165°F or 212°F Replaceable (A-DY, B-DY, C-DY, D-DY Only)  165°F or 212°F (MB-3V Only)

## UL10A-DY - BLADES IN AIR-STREAM

UL Classified UL555 - Meets NFPA 90A Standards



### 1 ½ Hour Rating

Vertical Mount - With Spring  
4" x 4" to 24" x 24"

Airflow Pressure Ratings  
Up to 2,400 FPM at 4" W.C.

## UL10B-DY BLADES OUT OF AIRSTREAM

UL Classified UL555 - Meets NFPA 90A Standards



### 1 ½ Hour Rating

Vertical Mount - With Spring  
4" x 3" to 24" x 24"

Airflow Pressure Ratings  
Up to 2,400 FPM at 4" W.C.

## UL10C-DY (SQUARE DAMPER WITH ROUND COLLARS)

UL Classified UL555 - Meets NFPA 90A Standards



### 1 ½ Hour Rating

Vertical Mount - With Spring  
Minimum Collar Size: Round:  
3" to 8"

Airflow Pressure Ratings  
Up to 2,400 FPM at 4" W.C.

## UL10D-DY - THINLINE - 2" DEEP

UL Classified UL555 - Meets NFPA 90A Standards



### 1 ½ Hour Rating

Vertical Mount - With Spring  
4" x 4" to 12" x 12"

Airflow Pressure Ratings  
Up to 2,400 FPM at 4" W.C..

## FDD-MB-3V - MULTI-BLADE (LARGER THAN 24 X 24)

UL Classified UL555 - Meets NFPA 90A Standards



### 1 ½ Hour Rating

Vertical Sizes:  
Larger than 24" x 24" to 36" x 48"  
Multiple Sections: 108" x 96"

Horizontal Sizes:  
Larger than 24" x 24" to 36" x 48"  
Multiple Sections: 72" x 96"

Airflow Pressure Ratings  
Up to 2,000 FPM at 4" W.C.



### 3 Hour Rating

Vertical Sizes:  
Larger than 24" x 24" to 36" x 48"

Horizontal Sizes:  
Larger than 24" x 24" to 36" x 48"

Airflow Pressure Ratings  
Up to 2,000 FPM at 4" W.C.

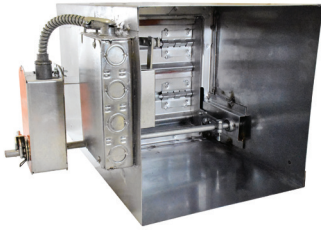
# COMBINATION FIRE/SMOKE DAMPERS

Note: Designed and tested to exceed all U.L., U.L.C and N.F.P.A. requirements for fire dampers as well as to meet or exceed all U.L. (555S) and N.F.P.A. requirements for smoke dampers. Intended for use where building codes call for the fire damper to also operate as a smoke damper.

FRAME	BLADES	HEAT RESPONSIVE DEVICES	OPTIONS
Roll-formed galvanized steel hat-section with staked corners and integral bracing	16ga. (3V) Roll-formed galvanized	Fusible links - 165°F and 212°F Heat Sensor - 165°F, 212°F and 350°F	Blade Position Indication Switches Electric Heat Sensor STOR DTOR 20ga sleeve or 20ga side plate TDF Connection Available

## MODEL FSD-3V-211

U.L. 555S Classified / Class II U.L. 555 Classified 1 ½ Hours



Minimum Size  
8" w x 6" h

Maximum UL Listed Size  
Single Section: 36" w x 48" h

Multiple Assembly  
Vert: 108" w x 96" h  
Horz: 72" w x 96" h

U.L. 555S listed and labeled as a Leakage Class I rated (smoke) damper with airflow in both directions. Class I provides for a maximum leakage of 4cfm per sq. ft. at 1.0" static pressure and a maximum of 8cfm per sq. ft. at 4.0" static pressure.

## MODEL FSD-3V-212

U.L. 555S Classified / Class II U.L. 555 Classified 1 ½ Hours



Minimum Size  
6" w x 6" h

Maximum UL Listed Size  
Single Section: 36" w x 48" h

Multiple Assembly  
Vert: 108" w x 96" h  
Horz: 72" w x 96" h

U.L. 555S listed and labeled as a Leakage Class II rated (smoke) damper with airflow in both directions. Class II provides for a maximum leakage of 10cfm per sq. ft. at 1.0" static pressure and a maximum of 20cfm per sq. ft. at 4.0" static pressure.

## MODEL FSD-3V-231

U.L. 555S Classified / Class II U.L. 555 Classified 3 Hours



Minimum Size  
8" w x 6" h

Maximum UL Listed Size  
Single Section: 36" w x 36" h

Multiple Assembly  
Vert: 72" w x 36" h  
Horz: 72" w x 36" h

U.L. 555S listed and labeled as a Leakage Class I rated (smoke) damper with airflow in both directions. Class I provides for a maximum leakage of 4cfm per sq. ft. at 1.0" static pressure and a maximum of 8cfm per sq. ft. at 4.0" static pressure.

## MODEL FSD-3V-232

U.L. 555S Classified / Class II U.L. 555 Classified 3 Hours



Minimum Size  
6" w x 6" h

Maximum UL Listed Size  
Single Section: 36" w x 48" h

Multiple Assembly  
Vert: 72" w x 48" h  
Horz: 72" w x 48" h

U.L. 555S listed and labeled as a Leakage Class II rated (smoke) damper with airflow in both directions. Class II provides for a maximum leakage of 10cfm per sq. ft. at 1.0" static pressure and a maximum of 20cfm per sq. ft. at 4.0" static pressure.

# CONTROL DAMPERS

FRAME	BLADES	LINKAGE	EXTENDED DRIVE PIN
Roll-formed galvanized steel hat section with staked corners and integral bracing. Bronze oilite bearings press-fit into frame	16ga. Roll-formed galvanized steel. 5.25" wide	Concealed in frame. Linkage bars are .125" thick plated steel	Removable 1/2" round diameter, plated steel

## OPB/PBD SERIES

### Control Dampers



#### OPB/PBD Standard

8" x 8" to 48" x 48"

Multi-section Unlimited. Supplied with jackshafting. Consult factory.

#### Options

6" Shaft / 9" Shaft

Manual Hand Quadrant

May be made to accommodate higher than the recommended 2.5" w.c. static pressure



#### OPB/PBD Low Leakage

8" x 8" to 48" x 48"

Multi-section unlimited. Supplied with jackshafting. Consult factory.

Extruded vinyl seals (50F - 250F).

Tested to AMCA Standard 500.

Leakage Cfm/Sq.Ft.:

1.0" w.g./3.5

2.5" w.g./5.0

4.0" w.g./7.0

# ACCESS DOORS

DOOR	OPTIONS	WALK-THRU DOORS
Hinged or Cam Design	Available in Galvanized, Galvanneal, Stainless Steel or Aluminum	Available in custom sizes. Please contact your Duro Dyne Territory Manager for more information.

## INSULATED ACCESS DOORS



### Hinged

**Gasket**  
Moisture, oil and grease resistant neoprene

**Insulation**  
Filled with 1" 1½ lb fiberglass

**K factor**  
.26+.03@75F

**Label**  
Product label leaves space for project notes



### Cam

**Gasket**  
Moisture, oil and grease resistant neoprene

**Insulation**  
Filled with 1" 1½ lb fiberglass

**K factor**  
.26+.03@75F

**Label**  
Product label leaves space for project notes

## SELF-STICK INSULATED ACCESS DOORS



### Hinged

**Gasket**  
1" wide gasketed frame for fastening and sealing integrity

**Easy Installation**  
Easy to position - No "dove tails" to align and bend



### Cam

**Gasket**  
1" wide gasketed frame for fastening and sealing integrity

**Easy Installation**  
Easy to position - No "dove tails" to align and bend

## VISION PANEL ACCESS DOORS

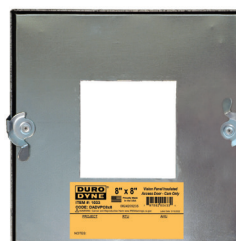


### Hinged

**Window**  
Allows viewing of inside ductwork. Two layers of shatter proof Lexan creates an insulated air pocket

**Gasket**  
Door to frame & frame to duct neoprene gasket for airtight seal

**Insulation**  
Filled with 1" closed cell foam



### Cam

**Window**  
Allows viewing of inside ductwork. Two layers of shatter proof Lexan creates an insulated air pocket

**Gasket**  
Door to frame & frame to duct neoprene gasket for airtight seal

**Insulation**  
Filled with 1" closed cell foam

## WALK-THRU ACCESS DOORS



### Hinged - Heavy-Duty

**Opening Size**  
Minimum 18" w x 36" h  
Maximum 24" w x 72" h

**Handles**  
36" h to 60" h - 2 SP-20 Handles  
61" h to 72" h - 3 SP-20 Handles

**Frame**  
14ga galvanized steel - mitered welded corners

**Door**  
20ga galvanized steel - 1" Deep - Insulated



To order, contact your  
local sales representative.

[durodyne.com](http://durodyne.com)  
631.249.9000

